

Umbauten, Erneuerungen, Retrofit

Photo report WU_275

Lathe Tacchi Remodeling, retrofit

Created hpw29_11_2018.

Tacchi CNC lathe
Sinumerik CNC control with cycles and graphics.

Cultivation of new CNC control, new feed motors.
All electrics renewed; PLC for all M, S and T
functions created. replaced all the relays control
to PLC control.



Figure 1: The Tacchi CNC lathe gets control of new generation.



Figure 2: Installation of new CNC with commissioning and training

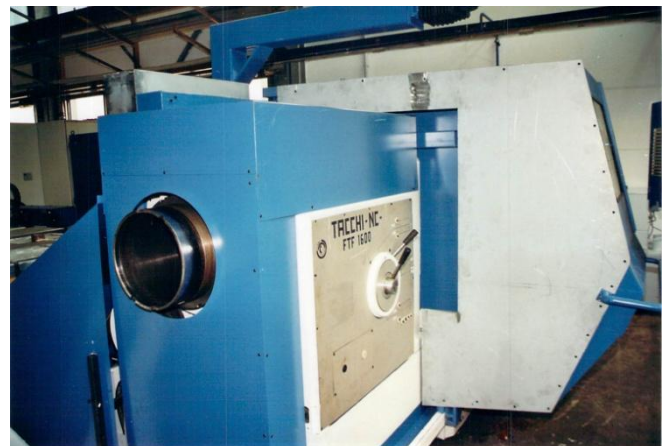


Figure 3: The machine also has a large spindle bore as an oilfield lathe.



Figure 4: The WIAP made the design and execution of the conversion.

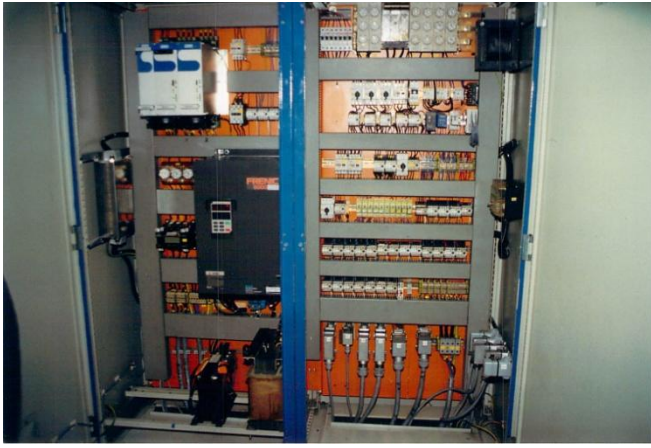


Figure 5: The electrical part was also renewed.



Figure 6: Repair headstock Tacchi



Figure 7: The camp was broken

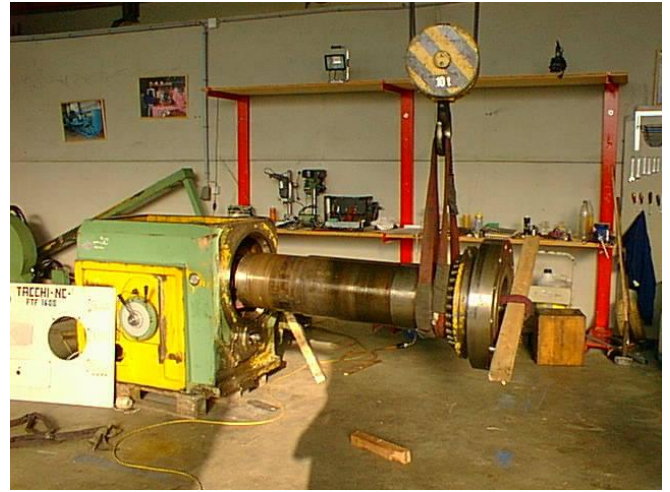


Figure 8: Each manufacturer has to make his own way of spindle bearings. If the heat presses too great a distance thrust bearing, certain types of bearings are not the best. Tacchi in our opinion, not chosen the best spindle bearing solution in the machine.



Figure 9: Because of the heat traces of inner life can already recognize what the source of error was for the damage.

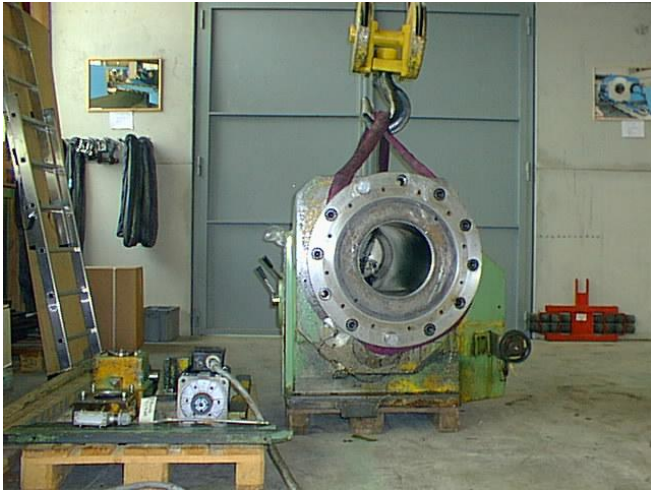


Figure 10: Soon, the spindle is again ready

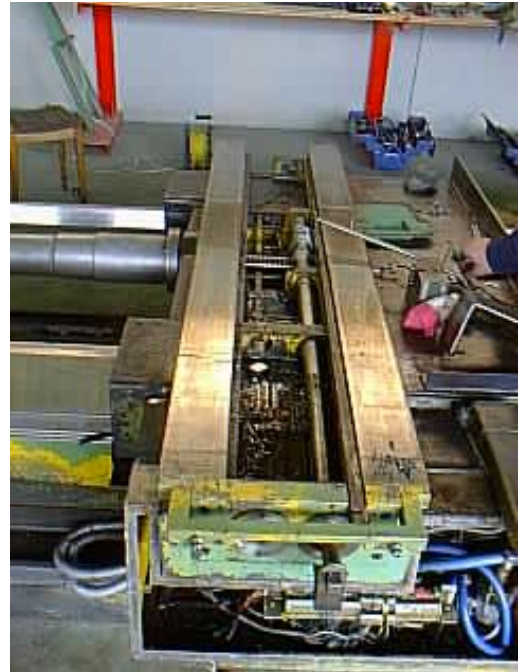


Figure 12: The whole cross slide was newly overhauled.

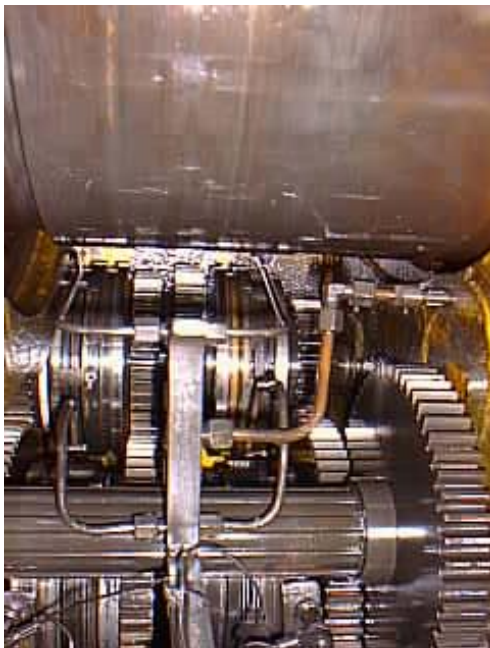


Figure 11: If everything is so compact packaged in a headstock, you could tell that there are machine manufacturers who have a little something to do with Ferrari!

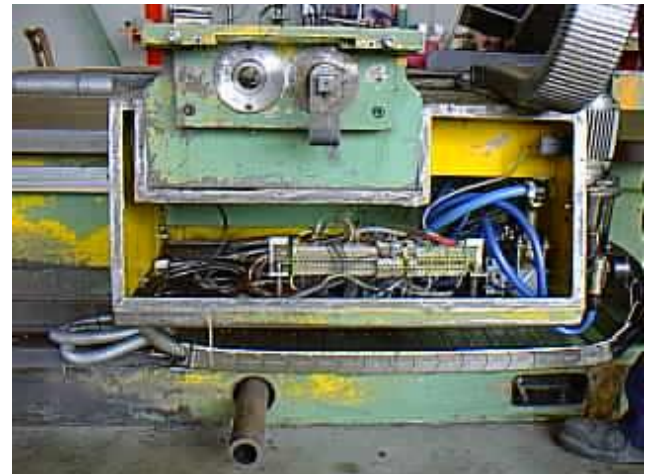


Figure 13: The cables all renewed, some hours were needed.



Figure 14: In a revision is a lot of work



Figure 14: Many machine builders thoughts are recognizable at a revision. The characteristics of each manufacturer can be assessed.



Figure 15: Electrical and Mechanical heard everything together at a machine revision. The way to a cleaner and painter.



Figure 16: final revision.

The WIAP AG continues to expand its machine tools and has a subcontractor base. Whether for new machines or conversions; there are usually used everywhere the same internal components. Thus, the spare parts warranty is secured.

When WIAP AG are not only the old who can do that. For years, the WIAP this training, intensified for the cockroaches. There are always two shaving machines at hand.

The cost of a retrofit (conversion with revision) to a new machine is about 40 to 60% of a new machine, because the basic meat is available. Only an exchange of CNC without drives what is possible today, with analog drives, can not be held rare even among 10 to 20% of the machines new purchase value. Even then, you have the built latest CNC control on the machine so that the operator does not feel he has an old machine. Thanks to the WIAP alarm system design prevents incorrect operations and not know how to do something, backed with messages. This results in a very simple operation for all employees who work on a retrofitted by the WIAP machine. Thus its pleasure to work with the machine

Phone: ++ 41 62 752 42 60

Fax: ++ 41 62 752 48 61

wiad@widmers.info

www.widmers.info / www.wiap.ch

WIAP® AG Ltd SA

Industriestrasse 48L

CH-4657 Dulliken

